



DAECON

DAECON
DAEHAN
CONSULTANTS

DAEHAN CONSULTANTS CO., LTD.

CONTENTS

- 01 Introduction
- 02 History
- 03 Mission / Vision
- 04 Road Design
- 05 Railway Design
- 06 Land Development
- 07 Water Resources, Water Supply and Sewerage Design
- 08 Electric Power Design
- 09 Environmental Engineering
- 10 Structural Design
- 11 Geotechnical and Tunneling Design
- 12 Transportation Planning
- 13 Construction Management
- 14 Research Center
- 15 Portfolios

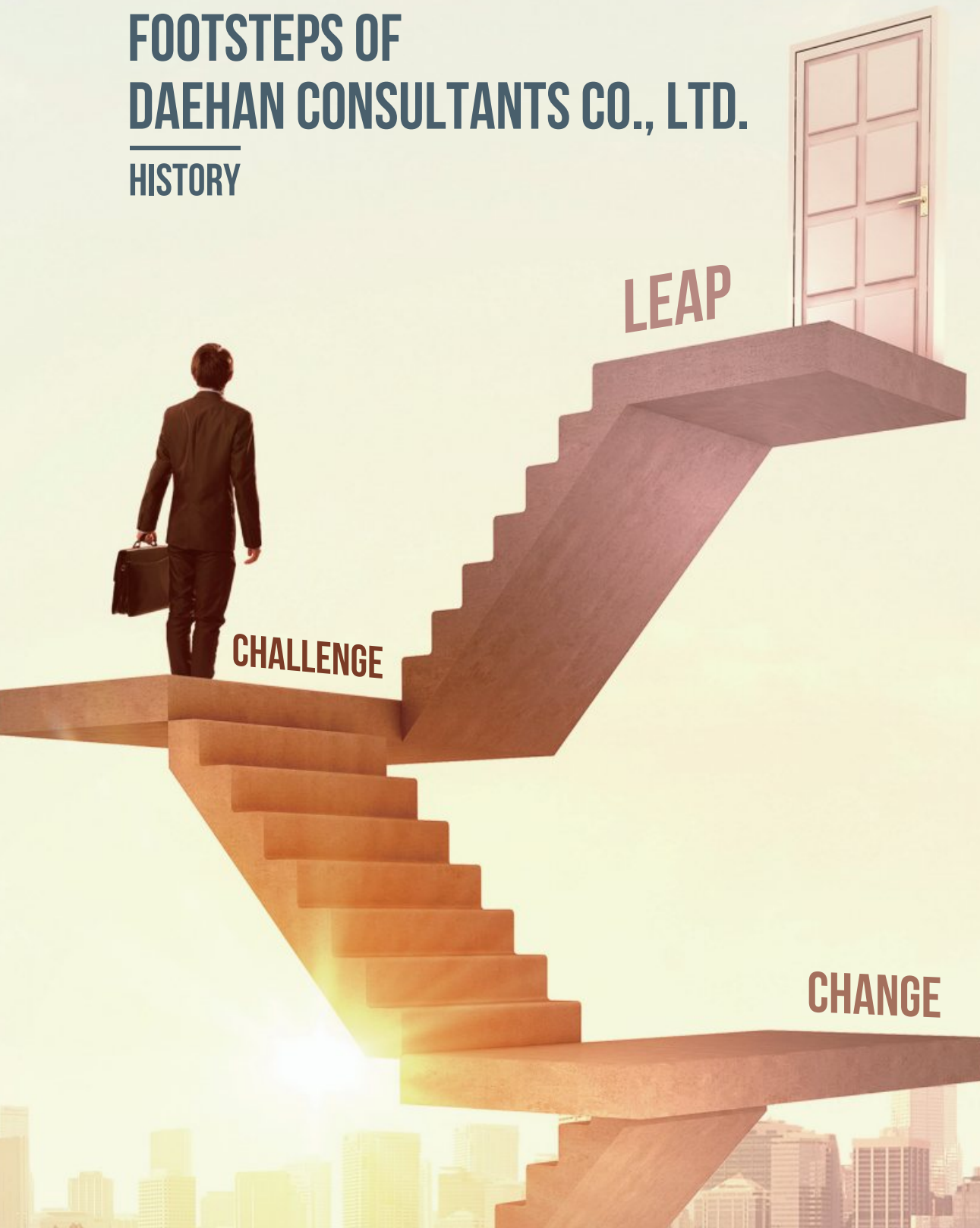


DAECON

The leading engineering consultant in the Republic of Korea,
Daehan Consultants Co., Ltd.

Daehan Consultants Co., Ltd. is a multidisciplinary engineering consultant providing client-tailored services from concept planning, feasibility study, and engineering design to analysis, assessment, and construction supervision across all sectors including roads, structures, railways, urban planning, tunnels, utility tunnels, transportation planning, environment, water supply and wastewater.

FOOTSTEPS OF DAEHAN CONSULTANTS CO., LTD. HISTORY



1960'S~70'S



- 1967
· Founded Daehan Consultants Co., Ltd.
- 1968
· Chartered as an Expertise Service of Engineering
- 1973
· Chartered for Service of Engineering Expert
- 1976
· Chartered for Topographical Survey Service for Constructions and Civil Works
- 1978
· Technology partnership with WARDROP, MORTON INC.(Canada)
· Registered as a Consultant (IBRD, ADB)

CHANGE, 1980'S



- 1985
· Awarded Excellency in Service (Minister of Construction, Korea)
- 1986
· Chartered for Service of Environmental Impact Assessment, Korea
- 1987
· Awarded Presidential Citation, Tin Tower Order of Industrial Service Merit (Korea)

CHALLENGE, 1990'S



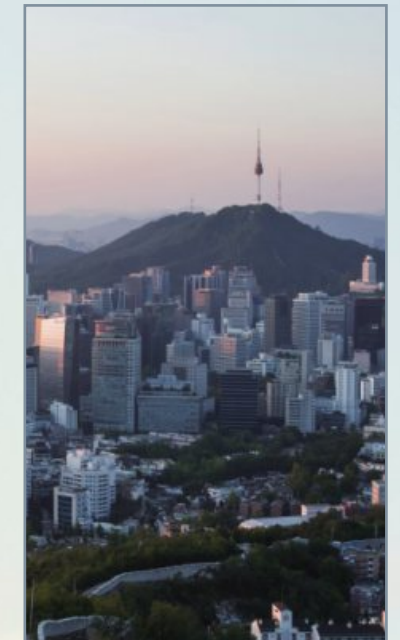
- 1993
· Registered as an organization for Traffic Impact Assessment (Ministry of Construction and Transport, Reg. No.1, Korea)
- 1994
· Chartered as an Expertise of Supervision for Constructions and Civil Works (Ministry of Construction and Transport, Class-10, Korea)
· Chartered for the Planning of Energy Use (Group 1), Korea
· Establishment and registered R&D Center
- 1995
· Registered for Expertise Service of Safety Diagnosis, Seoul
- 1997
· Chartered for Service of Design and Construction Supervision for Electric Power Facilities, Korea
- 1998
· Certified ISO9001, KSI9001(LRQA: KB981012)
· Chartered for Public Topographical Survey Service for Constructions and Civil Works

LEAP. 2000'S



- 2001
· Chartered for Service of Disaster Impact Assessment, Korea
· Chartered for Service of Population Impact Assessment, Korea
- 2002
· Registered as an International Contractor, Korea
- 2004
· Certified ISO14001:1996, KSA14001:2001 (GCS)
- 2007
· Registered as an organization for Disaster Safety and Response Planning (National Emergency Management Agency, Korea)

2010'S ~ PRESENT



- 2018
· Acquired Dongwoo Engineering Co., Ltd. (Safety Diagnosis Expertise Organization)
- 2019
· Selected as a Model Longevity Company, Seoul
- 2020
· Chartered for Service of Information & Telecommunications, Korea
· Designated as a Family-Friendly Firm, Korea
- 2021
· Chartered as an Engineering Consultant and Contractor for individual sewage treatment facilities, Korea
· Chartered as an organization for Engineering Analysis (Public sewerage sector), Korea
· Chartered for Service of General Fire-fighting Facilities (Electrical and Mechanical), Korea

MISSION

We create happiness for our clients and members in our firm.

We strive to become a world-class firm that creates a happier world for all by providing the highest quality tailored services for our clients' satisfaction and by improving the quality of life for the members of our firm.

VISION

Change, Challenge and Leap

We, Daehan Consultants Co., Ltd., change relentlessly, challenge ourselves in the face of crisis, and are ready to leap as a leader in the new future.

ROAD DESIGN

Bringing to reality the roads of the future centered on nature and people by applying cutting-edge technology

SMART ROAD DESIGN METHOD

SAFETY

- Reduced Traffic accidents
- Reliability

ECONOMICAL EFFICIENCY

- Reduced cost
- Expedited schedule

CONVENIENCE

- IOT, C-ITS
- Convenience facilities

ENVIRONMENT FRIENDLY

- Eco-Road
- Green Road



DRONE

- Detailed Investigation



VR

- Road Alignment Review

BIM

- 3D Design

RAILWAY DESIGN

Eco-friendly railways design on accumulated technology and experience on projects including subways, wide-area railway networks, and high-speed rail.

EURO

TSR

RUSSIA

TCR

TMGR

TMR

CHINA

KOREA



LAND DEVELOPMENT

We establish land and urban planning for smart and sustainable development.



Public housing district development in Jangsang Township, Ansan City

- Location: Jangsang Township, Sangrok Ward, Ansan City, Gyeonggi Province
- Area: 2,213,000m²
- Scope: Public housing district development plan

LAND DEVELOPMENT

We are true partners for your success in city and district developments.



Urban development plan and zoning for Yongsan International Business District

- Location: Hangang 3rd Street, Yongsan Township, Seoul
- Area: 510,385.9m²
- Scope: Urban development plan and Zoning

WATER SUPPLY AND SEWERAGE DESIGN

People living in harmony with nature, thanks to clear water.
We are making water smart!



CLEAN & TRUST
Water supply



PURPOSE & SUPPORT
Mechanical and electrical systems



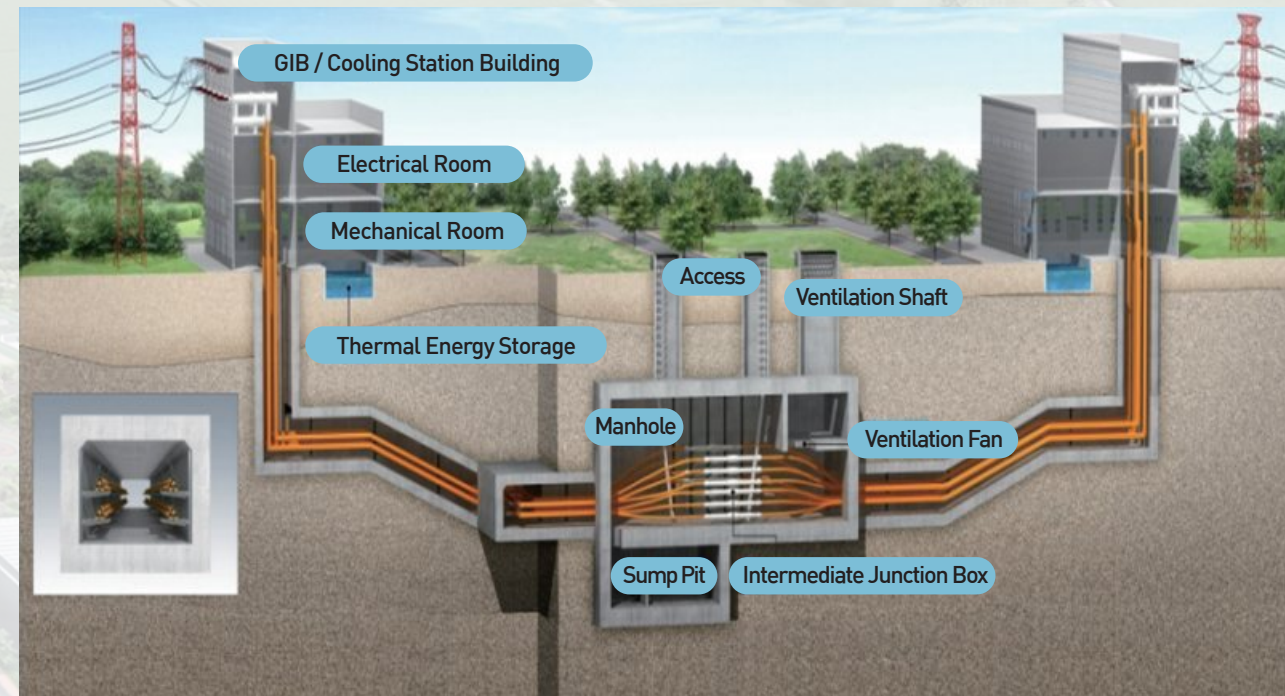
EFFECTIVE & SAFE
O & M



PURIFY & REUSE
Wastewater

ELECTRIC POWER DESIGN

Optimal utility tunnel design using underground transmission lines for stable power supply



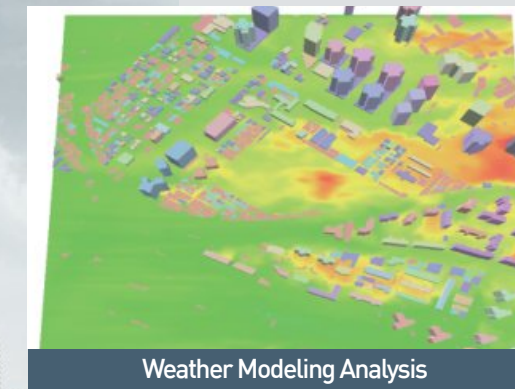
ENVIRONMENT ENGINEERING

Environmental planning that creates future environmental value

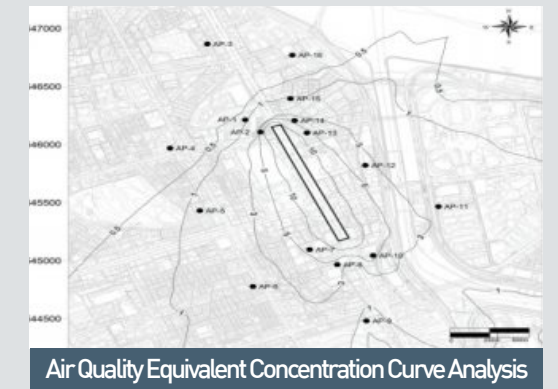
- Expert engineering team's wealth of experience applied to our deliverables including small-scale EIA, strategic EIA, EIA, and post EIA
- Detailed review and analysis of environmental impact through computer simulation of weather conditions, air quality, noise and vibration, and daylight tracking



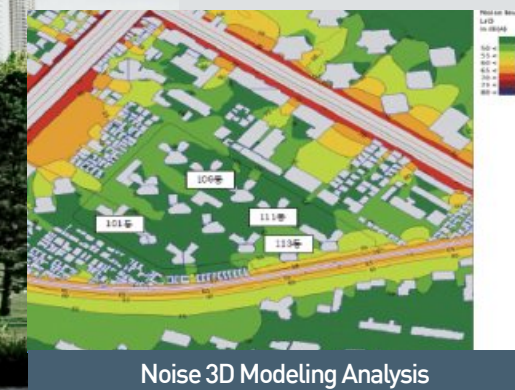
Environmental impact assessment for Gangnam Intermodal Transit Center for the underground space development in Yeongdong Boulevard, Seoul
Taking a leading role in planning to ensure harmony between people and environment



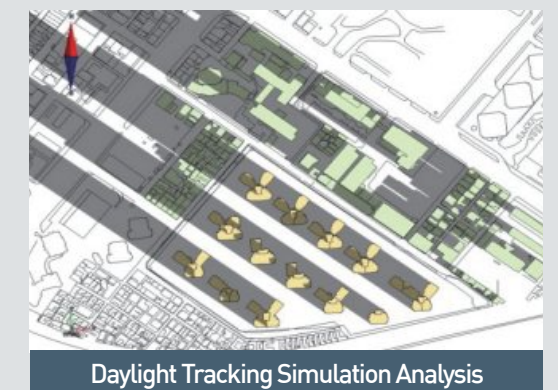
Weather Modeling Analysis



Air Quality Equivalent Concentration Curve Analysis



Noise 3D Modeling Analysis



Daylight Tracking Simulation Analysis

STRUCTURAL DESIGN

Innovative connections that surpass conventions!
Our structures connect nature and people,
past and present!



GEOTECHNICAL & TUNNELING DESIGN

We provide geotechnical solutions to all manner of challenges on ground conditions and tunnels



Tunneling Design



Geotechnical Engineering



Underground Safety Impact Assessment

TRANSPORTATION PLANNING

Always a trusted partner

- Transportation Planning
- Supply of Rapid Transportation
- Intelligent Transportation System Operation
- Green Transportation



CONSTRUCTION MANAGEMENT

Our CM experts propose optimal construction methodology considering economic efficiency based on constructability review of existing design, ultimately contributing to high-quality construction and development of Korea's best infrastructure networks.



RAILWAY CONSTRUCTION MANAGEMENT

From commencement through construction and handover, we achieve timely start of operation through optimal schedule management!

- High speed railway construction
- Conventional railway construction
- Wide-area railway construction
- Light railway construction
- Urban railway construction



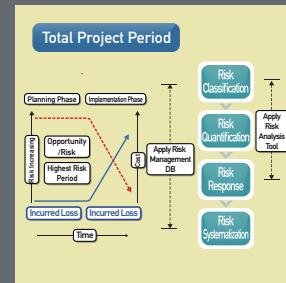
**Measurement
Management**
In Situ Measurement
Management



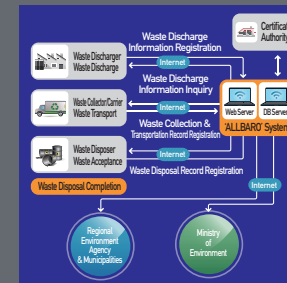
**Quality
Management**
Inspection and Testing



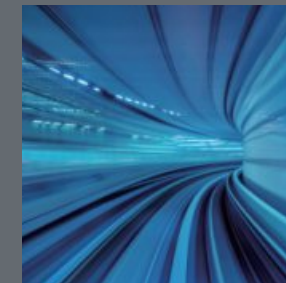
**Safety
Management**
Achieving Zero Accidents



**Progress
Management**
Risk Management for
Progress Delay



**Environmental
Management**
Construction Pollution
Mitigation Management



Interface
Railway Tracks, Signal,
Electric Power,
Telecommunications

SEWERAGE AND WATER CONSTRUCTION MANAGEMENT

SUCCESSFUL COMPLETION OF PROJECTS!

- Established track record of CM services for structures, pipelines, and other various water and wastewater works
- Wealth of experience in water and wastewater CM services nationwide
 - Successful completion of projects with cost saving, expedited schedule, and quality management

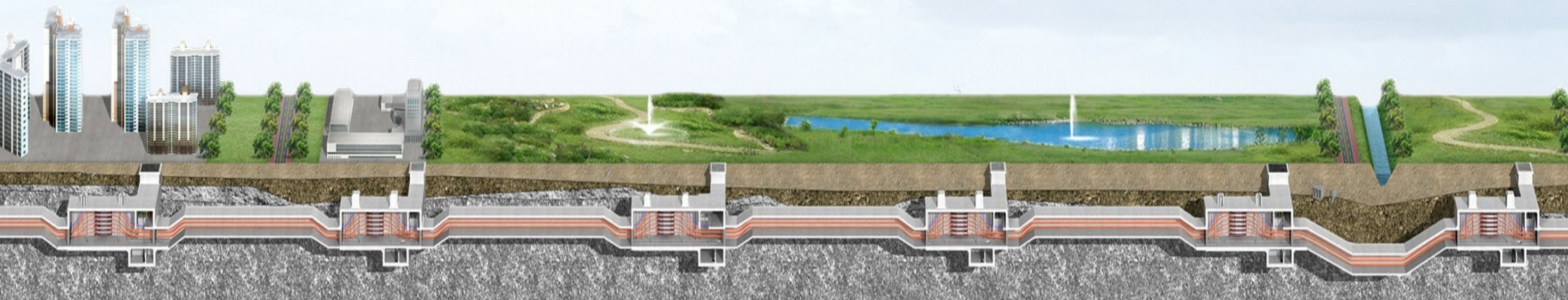


Construction management for Guksabong water distribution reservoir

- Client: Seoul Waterworks Authority
- Scope: $V=12,000\text{m}^3$, $D=400 - 1,000\text{mm}$, $L=3.0\text{km}$

ELECTRIC POWER CONSTRUCTION MANAGEMENT

High-quality construction supervision for utility tunnel on accumulated know-how and technical expertise.

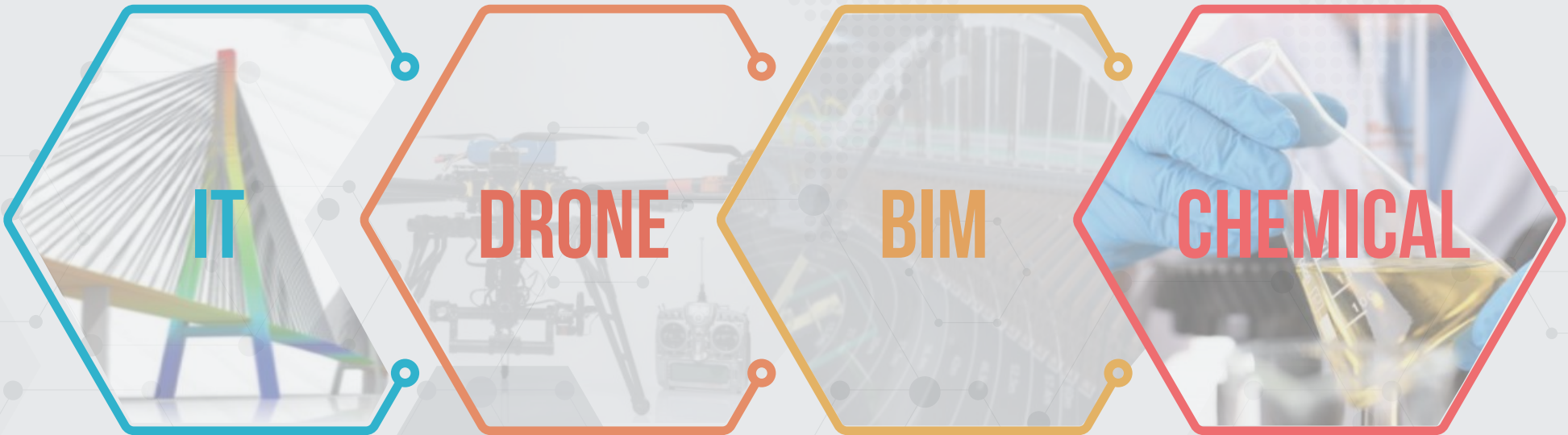


RESEARCH CENTER

Beyond 50 years,
Toward 100 years!



Smart & IT converged technology development for the 4th Industrial Revolution



HUMAN & EMOTION

| Current technology portfolio
· 36 patents held (3 cases pending)
· 1 new technology held (3 more cases being prepared for application)

PORTFOLIO

Expressway and national route design	
Expressway <ul style="list-style-type: none">Detailed design for Yeongcheon-Sangju expressway construction Sec. 7 (Old Sec. 4) (PPP)Detailed design for Hamyang-Ulsan expressway construction (Sec. 26)Detailed design for Hamyang-Ulsan expressway construction (Sec. 6)Detailed design for the construction of Daegu outer-ring expressway (Sec. 3)Detailed design for the construction of Yucheon Hi-pass IC of Jungbu-naeryuk expressway feeder roadBasic and detailed design for the construction of Seoul-Sejong expressway between Anseong and Guri City (Sec. 8)Basic and detailed design for the construction of Seoul-Sejong expressway between Anseong and Guri City (Sec. 6)Detailed design for Saemangeum-Jeonju expressway (Sec. 1)Detailed design for the construction of the second Seoul outer-ring expressway between Gimpo and Paju City (Sec. 5)Basic and detailed design for the construction of Sejong-Pocheon expressway between Sejong and Anseong City (Sec. 5)Detailed design for the construction of Pangyo Transfer Hub(lex-Hub) of Gyeongbu expressway and improvement of Daewang-Pangyo ICBasic and detailed design for Daesan-Dangjin expressway construction (Sec. 2) – On goingBasic and detailed design for Sejong-Cheongju expressway construction (Sec. 4) – On goingStructure stability review for Hamyang-Changnyeong expressway No.14 (Sec. 4)Structure stability review for Hamyang-Changnyeong expressway No.14 (Sec. 3)	National route <ul style="list-style-type: none">Basic design for national route construction between Yecheon County and Jibo TownshipBasic design for national route construction between Hongcheon and Chuncheon City (Sec. 1)Detailed design for national route construction between Paltan Township and Bongdam TownDetailed design for national route construction between Posan and Seomang VillageBasic and detailed design for national route construction between Gonam and Changgi Village (Sec. 2)Basic design for the second Gyeongchun national route construction between Namyangju and Chuncheon City (Sec. 2)Re-design for small-stream relocation for national route construction between Seongnam City and Janghowon Town (Sec. 5)
	Local highway <ul style="list-style-type: none">Feasibility study and basic design for local connection highway construction between Yanggam and Seotan TownshipDetailed design for widening and pavement for local highway between Gusan Township and Okdong VillageBasic and detailed design for local highway construction between Noeun Township and Buk-Chungju ICBasic and detailed design for local highway construction between Sangchon and Hwanggan Township (Sec. 2)Basic and detailed design for local highway construction between Yeongeum and Geumseong TownshipDetailed design for widening and pavement for local highway between Jangheung County and Yuchi Village – On going
Railway design	
High speed railway <ul style="list-style-type: none">Construction supervision for Gyeongbu high speed railway (Sec. 8)Construction supervision (Supervisory authority representative) for subgrade of Honam high speed railway (Sec. 1-4 and 2-1)Basic and detailed design for subgrade construction of Suseo high speed railway between Suseo and Pyeongtaek Station (Sec. 4)Detailed design for additional subgrade construction of Suseo high speed railway (Sec. 2)Basic and detailed design for Honam high speed railway construction between Gomakwon and Mokpo Station (Phase 2) (Sec. 7)	Conventional railway <ul style="list-style-type: none">Detailed design for subgrade construction of Donghae-nambu double-track line between Busan and Ulsan Station (Sec. 2 and 3)Basic and detailed design for the construction of Samnangjin-Jinju section of Gyeongjeon double-track line between Jinyeong and Changwon Station (Sec. 3)Detailed design for subgrade construction of Ulsan-Pohang double-track line between Geoncheon wye track and Nawon Station (Sec. 6)Basic and detailed design for subgrade construction of Jinju-Gwangyang double track line between Jinju and Wansa Station (Sec. 1)Complementation design for subgrade for the rail track rehabilitation of Geongwon line between Shintanri and Cheolwon StationDetailed design for subgrade construction of Daegu double-track line between Dong-Daegu and Yeongcheon Station (Sec. 1 and 4)Basic and detailed design for subgrade construction of Seohae double-track line between Hongseong and Songsan Station (Sec. 9)Basic and detailed design for subgrade construction of Dongducheon-Yeoncheon double-track lineBasic design for the construction of Daegok-Sosa double-track line (Sec. 2)Detailed design for widening of Hohyeongu Bridge of Samcheok line between Donghae and Samcheok Station (STA. 6km376)Basic and detailed design for subgrade construction of Shin-Ansan double-track line (Sec. 1 and 4)Basic and detailed design for subgrade construction of Samseong-Dongtan GTX line (Sec. 3 and 5)Construction management for detailed design for the construction of Shin-Ansan double-track line (PPP)Detailed design for the construction of disaster prevention facilities for 53 sites of Yeongdong line between Mundan and Seokpo StationDetailed design for the construction of disaster prevention facilities for 52 sites of Taebaek line between Ipseokri and Baeksan Station, etc.Basic design for subgrade construction of Wolgot-Pangyo double-track line (Sec. 10)Detailed design for subgrade construction of Wolgot-Pangyo double-track line (Sec. 2)Detailed design for subgrade construction of Wolgot-Pangyo double-track line (Sec. 4)Detailed design for subgrade construction of Chuncheon-Sokcho single-track line (Sec. 8)Detailed design for subgrade construction of Indeogwon-Dongtan double-track line (Sec. 2)Detailed design for subgrade construction of Indeogwon-Dongtan double-track line (Sec. 4)Detailed design for subgrade construction of Indeogwon-Dongtan double-track line (Sec. 11)Preliminary feasibility study on railway construction between Jochiwon and Boryeong Station
Railway depot <ul style="list-style-type: none">Basic and detailed design for railway depot construction for Jinjeop line (extension of Seoul urban railway line 4)	
Urban railway <ul style="list-style-type: none">Design supervision for detailed design for Daegu urban railway line 3 constructionDesign supervision for detailed design for extension of Incheon urban railway line 1 from Songdo Landmark City StationBasic and detailed design for the construction of Seoul urban railway line 7 between Dobongsan and Okjeong Station (Sec. 3)Preliminary feasibility study on extension of Dongbuk line from Madoul Station, etc.Basic and detailed design for extension of Seoul urban railway line 7 from Cheongna International City StationBasic and detailed design for extension of Seoul urban railway line 7 from Cheongna International City Station (Sec. 4)	
Subway <ul style="list-style-type: none">Detailed design for the construction of Seoul subway line 9 (Phase 2) (Sec. 917)Complementation design for Gangnam Ward Office Station of Seoul subway Bundang line (Sec. 4)Engineering design for extension of Daegu subway line 2 from Gyeongsan Station (Sec. 1)Detailed design for Seoul subway line 7 extension (Sec. 702)Basic and detailed design for the elevator facilities construction for Seoul subway Line 1 – Line 4 in 2018Detailed design for subgrade improvement of Bundang double-track line between Cheongdam and Seonneung Station	
Light electric railway <ul style="list-style-type: none">Alternative design for the construction of demonstration route for Urban Maglev Train practical operation	
Turn-key and Alternative Design	
Roads and Bridges <ul style="list-style-type: none">Alternative design for widening and pavement of access road for Geoga Bridge between Jangseungpo-port and Jangmok Township - Gyeongsangnam Province Government (Daewoo E&C Co., Ltd.) (T/K)Alternative design for Chungju City bypass construction between Yongdu Village and Geumga Township (Geumga Bridge-Daejeon City Hall section) (Hyundai E&C Co., Ltd.) (T/K)Detailed design for Busan-Ulsan expressway (Sec. 9) - Korea Expressway Corporation (Dong-A Construction Industrial Co., Ltd.) (T/K)Detailed design for Jeonju-Hamyang expressway (Sec. 10) - Korea Expressway Corporation (Daewoo E&C Co., Ltd.) (T/K)Detailed design for widening of national route between Sanoe and Sangbuk Township (Neungdong Tunnel) (Sec. 3) - Busan Regional Construction and Management Administration (Hyundai E&C Co., Ltd.) (T/K)Basic plan for Malgogae-pass alignment improvement in Wonpyeong District - Wonju Regional Construction and Management Administration (Poonglim Industrial Co., Ltd.) (T/K)Detailed design for Jungbu-naeryuk expressway construction between Yeosu and Gumi City (Sec. 8) - Korea Expressway Corporation (Hyundai E&C Co., Ltd.) (T/K)Detailed design for widening of Donghae expressway between Donghae City and Jumunjin Town (Sec. 5) - Korea Expressway Corporation (Hyundai E&C Co., Ltd.) (T/K)	
Light Electric Railway <ul style="list-style-type: none">Detailed design for the construction of Busan subway line 3(light electric railway) (Phase 2) (Sec. 326) - Busan Transportation Corporation (Lotte E&C Co., Ltd.) (T/K)	
Railway <ul style="list-style-type: none">Basic design for Busan new port hinterland railway between Jinyeong and Nokyeong Station (Sec. 3) - Korean National Railway (Hyundai Development Co., Ltd.) (T/K)Alternative design for subgrade construction of Gyeongbu high speed railway (Sec. 13-4) - Korea high speed rail construction authority (Hyundai E&C Co., Ltd. and SK E&C Co., Ltd.) (T/K)Basic design for the construction of Samnangjin-Jinju section of Gyeongjeon line between Jinyeong and Changwon Station (Sec. 3) - Korean National Railway (SK E&C Co., Ltd.) (T/K)Basic design for railway improvement of Jeolla line between Yecheon and Yeosu Station - Korean National Railway (Poonglim Industrial Co., Ltd.) (T/K)Basic design for railway improvement of Jeolla line between Seongsan and Shipung Station - Jeolla Province Government (Hyundai Development Co., Ltd.) (T/K)Detailed design for Gyeongchun double-track line construction (Sec. 6) (T/K)Engineering design for railway relocation of Yeongdong line between Dongbaek and Dogye Station (T/K)	
Subway <ul style="list-style-type: none">Detailed design for Seoul subway line 7 extension (Sec. 702) - Seoul subway construction HQ (Hyundai E&C Co., Ltd.) (T/K)Detailed design for Seoul subway line 9 construction (Sec. 904) - Seoul Metropolitan subway construction HQ (GS E&C Co., Ltd. and SK E&C Co., Ltd.) (T/K)Detailed design for Daejeon subway construction between Dongseo and Yongmun 4-way intersection - Daejeon subway construction HQ (Ssangyong E&C Co., Ltd.) (T/K)Engineering design for Seoul subway line 7 (Sec. 7-20) - Seoul Metropolitan subway construction HQ (Sambu Construction Co., Ltd.) (T/K)	

Land development	
Public housing project <ul style="list-style-type: none">Basic survey and basic design for Janghang public housing district in Goyang CityBasic survey and basic design for Ujeong public housing district in Uijeongbu City – On goingBasic plan and basic design for Wangsuk public housing district No.2 in Namyangju City – On goingBasic plan and basic design for Changneung public housing district in Goyang City – On goingBasic plan and basic design for Jangsang public housing district in Ansan City – On going	Housing site development <ul style="list-style-type: none">Engineering service for housing site development of Bongdam district in Hwaseong CityHousing site development plan of Mokgam district in Siheung CityEngineering design for land development and urban infrastructure construction for Taean district in Hwaseong City, etc.Engineering service for housing site development of Jinju Innovation City in Gyeongsangnam Province
Basic Urban plan and Urban management plan <ul style="list-style-type: none">Basic Urban plan (alteration) in Mokpo CityBasic Urban plan, urban management plan and engineering service for cadastral information in Gunpo CityBasic Urban plan and urban management plan in Gunsan City	Urban development and land substitution plan <ul style="list-style-type: none">District unit plan and land substitution plan for west Jeonju new town developmentLand substitution plan for urban development of Hyocheon district in Jeonju CityLand substitution plan for urban development of Yeongjong Haneul City of Yeongjong district, Incheon Free Economic ZoneBasic survey and basic design for urban development of Daecheon Station districtEngineering service for urban development of Hakik district No.1 in Yonghyeon Township, Incheon Metropolitan CityEngineering service for urban development of Yongsan International districtDetailed design for urban development of new Jinju Station districtBasic survey and basic design for urban development of Weoldong district in Siheung City, etc.
District unit plan <ul style="list-style-type: none">District unit plan (class I) for the west area of Gyeongbokgung placeDistrict unit plan for greenbelt released area in Seongbuk WardDistrict unit plan for maintenance of Namdaemun Traditional MarketDistrict unit plan (class I) for surrounding area of Gwangwon UniversityDistrict unit plan (class I) for redevelopment of Shinchon districtDistrict unit plan for redevelopment of Hongje districtDistrict unit plan for redevelopment of surrounding area of Gunja stationDistrict unit plan for partial redevelopment of Gaepo housing development districtDistrict unit plan for redevelopment in Yongsan Ward	Hot springs and tourist site development <ul style="list-style-type: none">Development plan for hot springs tourist complex in Mungyeong City and Yecheon CityDevelopment plan for Chunghyo theme park in Yecheon City and recreational tourist complex in Cheonan City
Urban and residential environment improvement <ul style="list-style-type: none">Basic plan for urban and residential environment improvement in Suwon City (2020)Basic plan for urban and residential environment improvement in Goyang City (2020)Basic plan for urban and residential environment improvement in Hwaseong City (2020)Development plan for Changin-Sungin urban renewal promotion district in SeoulSelection of urban renewal district and promotion plan for Gunpo Station districtResidential environment improvement plan, Detailed design, etc.	Cemetery facilities <ul style="list-style-type: none">Basic and detailed design for national cemetery development for capital region and south region of KoreaBasic and detailed design for memorial centers development in Gwangmyeong and Inje CityBasic design for Seoul memorial park development
Industrial complex <ul style="list-style-type: none">Environmental impact assessment(alteration) and Detailed design for Jinju(Sabong) local industrial complexDevelopment plan alteration and Detailed design for Bugok district in Ansan national industrial complexBasic survey and basic design for development of Busan regional science industrial complex (Phase 2) and etc.	Park and Green space <ul style="list-style-type: none">Development plan for Daegu Grand Park, Biseul Mountain Urban Nature Park and, etc.Development plan for Chomakgol, Baekseok and Sajin neighborhood parkBasic and detailed design for eco-bridge of Gaepo Seoul metropolitan city road construction
	Ecological and Urban environment development <ul style="list-style-type: none">Detailed design for Deoksugung green street developmentDetailed design for green parking area development in Seongdong WardBasic and detailed design for the land development of Insect Bio Ecology institution
Transportation Planning and Traffic Assessment	
Transport system improvement <ul style="list-style-type: none">Basic design for transport system improvement for urban recreation projectBasic and detailed design for transport corridor improvement in SeoulTransport countermeasures for Segok Township, Gangnam WardBasic and detailed design for transport corridor improvement in 2020	Parking lot investigation and analysis <ul style="list-style-type: none">Investigation and analysis of parking lot supply-demand status in Gangseo Ward (2016)Investigation and analysis of parking lot supply-demand status in Dobong Ward (2019)
Traffic safety diagnosis <ul style="list-style-type: none">Traffic safety diagnosis for access road of Korea Zoonosis Research Institute, Chonbuk National UniversityTraffic safety diagnosis for widening and pavement of local highway between Wonhwa and Hyosan Village, etc.	BRT <ul style="list-style-type: none">Basic and detailed design for the installation of bus-only lane(BRT) on Siheung-Hangang road corridorBasic and detailed design for BRT in Guri-Namyangju corridor and review of introduction effect and priority order of BRT in Gyeonggi ProvinceBasic and detailed design for the installation of bus-only lane system on the airport road corridor
Traffic signal operation <ul style="list-style-type: none">Traffic signal system operation for Gangnam (south of Seoul) region in 2012Traffic signal system optimization and traffic signal operation DB construction in west of Seoul regionTraffic signal system operation for Gangnam (south of Seoul) region in 2014 - 2020	
Traffic impact assessment <ul style="list-style-type: none">Traffic impact assessment and improvement plan for the construction of central government-funded local highway between Buk-Chungju IC and Gageum TownshipTraffic impact assessment and improvement plan for the construction of Chungcheong-naeryuk national highway (Sec. 3)Traffic impact assessment and improvement plan for the construction of central government-funded local highway between Onam Town and Sudong TownshipImprovement plan for the relocation of Hyochang Station for Gyeong-ui double-track line construction between Yongsan and Gajwa StationTraffic impact analysis and improvement plan(alteration) for Jukjeon-Suwon double-track lineTraffic impact analysis and improvement plan for district unit development between COEX and Jamsil sports complex, etc.Traffic impact assessment for structural improvement of central government-funded local highway between Nakan and Sangsa Township in Suncheon CityTraffic impact assessment for district unit plan in Jangchung Township developmentImpact assessment for relocation site of Guro railway depot	
Water supply & Sewerage	
Engineering design <ul style="list-style-type: none">Basic and detailed design for Sanggye reservoir No.1 constructionBasic plan for Mia reservoir constructionFeasibility study on water source duplication in Gwangam water purification centerBasic design for performance improvement of Daerim stormwater pump station No.2 for 1 in 30 years storm eventFeasibility study on the digester operation of Gajwa public sewer treatment plantBasic plan on relocation of Heukseok stormwater pump stationBasic design for structural improvement of Yeongsan river estuary bank (Zone 3)Basic and detailed design for stormwater detention storage construction in Yangjae neighborhood parkSaemangeum dike construction (Zone 3) (T/K)Basic and detailed design for local water supply facilities modernization in Gimhae CityBasic and detailed design for local water supply facilities modernization in Muan CountyBasic and detailed design for local water supply facilities modernization in Iksan CityBasic and detailed design for local water supply facilities modernization in Yeongyang CountyBasic and detailed design for local water supply facilities modernization in Boryeong CityBasic plan for maintenance of old water supply pipelines in Gyeonggi Province	Safety diagnosis <ul style="list-style-type: none">Precise inspection and detailed design for sewerage facilities in Dobong WardPrecise safety diagnosis of Songjeong stormwater pump stationPrecise inspection of sewerage culvert in Gaebong TownshipPrecise inspection of Buan multi-purpose dam in 2016Precise inspection and detailed design for Bogwang drainage gate, etc.Precise safety diagnosis for Gangbyeon sluice gate No.4Precise safety inspection and detailed design for Simwon drainage gatePrecise safety diagnosis for Sasan reservoirPrecise safety diagnosis and precise safety inspection for Shillim distribution reservoir No.6, etc. in 2020

Environment

Small-scale environmental impact assessment

- Small-scale environmental impact assessment for Yanggeun Bridge construction of central government-funded local highway No.98
- Small-scale environmental impact assessment for the demonstration project for Mukdong ecological stream development
- Small-scale environmental impact assesssment Gangnam Intermodal Transit Center concerning the underground space development in Yeongdong Boulevard, Seoul
- Small-scale environmental impact assessment for the development of Salamander park development
- Small-scale environmental impact assessment for urban development of Daegok district in Gapyeong County
- Small-scale environmental impact assessment for the development of Seohyeon public housing area in Seongnam City
- Small-scale environmental impact assessment for the development of Gangdong public housing area in Busan
- Small-scale environmental impact assessment for improvement of metropolitan city road in Seoul International district

Strategic environmental impact assessment

- Strategic environmental impact assessment for alteration of urban management plan for the new right bank road of Yangjae-stream
- Strategic environmental impact assessment for the road construction between National Agency for Administrative City and Gongju (Sec. 2)
- Strategic environmental impact assessment for district unit plan in Jeong Township
- Strategic environmental impact assessment for urban development of Allim district in Chungju City
- Strategic environmental impact assessment for Guro railway depot reserved site
- Strategic environmental impact assessment for district unit plan in Jangchung Township area
- Strategic environmental impact assessment for Gyeonggi public housing area No.2 construction in 2019
- Strategic environmental impact assessment for district unit plan in Seodong district in Osan City
- Strategic environmental impact assessment for additional mooring facilities for surface vessel in 2021
- Strategic environmental impact assessment for Gyeonggi public housing area No.2 development in 2021

Post environmental impact assessment

- Post environmental impact assessment for the construction of national route bypass between Baebang Town and Eumbong Township in Cheonan City
- Post environmental impact assessment for road construction, etc. in Gogunsan islands
- Post environmental impact assessment for Bundang double-track line operation between Wangsipri and Seoneung Station
- Post environment impact assessment for Hanam subway line 5 extension (Sec. 1)
- Post environmental impact assessment for community cultural education center construction in University of Seoul campus
- Post environmental impact assessment for railway depot construction of Jinjeop line (the extension line of Seoul subway line 4)
- Post environmental impact assessment for additional buildings construction in Gachon University campus
- Post environmental impact assessment for the construction of Converging Technology Center and the Department of Civil Engineering building in University of Seoul Campus
- Post environmental impact assessment for additional building construction in Yeon-geon Campus, Seoul national University
- Post environmental impact assessment for general medical treatment center construction in Seoul National University Hospital

Environmental impact assessment

- Environmental impact assessment for national route construction between Dong Town, Changwon City and Hallim Town, Gimhae City
- Environmental impact assessment for the construction of central government-funded local highway between Buk-Chungju IC and Gageum Township
- Environmental impact assessment for the construction of national route bypass between Yongjin Town and Ua Township in Jeonju City
- Environmental impact assessment for the construction of central government-funded local highway No.84 between Gilsang and Seonwon Township
- Environmental impact assessment for national highway construction between Pohang and Andong City (Sec. 1-1)
- Environmental impact assessment for Korea Institute of Science and Technology
- Environmental impact assessment for Seoul Campus of Chung-Ang University
- Environmental impact assessment for new Hangang road 3rd street Apartment in Yongsan Ward
- Environmental impact assessment for reconstruction of Samhwan Garak Apartment
- Environmental impact assessment for the reconstruction of Garak Samik Mansion Apartment
- Environmental impact assessment for the redevelopment of Daepyeong district No.1
- Strategic environmental impact assessment for national connection route construction between Seokgok and Bukmyeon

Engineering design for Bridges/ Interchanges/ Tunnels and underground shopping center

Bridges

- Detailed design for Daegu metropolitan city road construction between Sangdong Bridge and Dusan road[Sangdong 4-way intersection]
- Basic design for widening of access road (minor arterial road) for Ihwa Bridge
- Basic design for structural improvement of Gangbyeon urban expressway in Seoul
- Engineering design for overpass construction of Hwarang Intersection
- Engineering design for pedestrian bridge over Anyangcheon-stream/ in front of Yonsei University/ in Noryangjin Township/ in Isu Township
- Detailed design for Daegu metropolitan city road construction between Beommol district and Dusan 5-way intersection and, Daedeok mansion in Daegu Metropolitan City
- Engineering design for the improvement of Gumi Bridge/ Sangjin Bridge construction
- Engineering design for Baekui Bridge construction/ for Seocheon Bridge improvement
- Engineering design for the construction of second floor of Jamsu Bridge/ Seongdong Bridge/ Banpo Bridge
- Engineering design for Seoul Bridge construction
- Detailed design for assessment and improvement of earthquake resistant capacity for the flyover of the north end section of Yeongdong bridge for Seoul metropolitan city road, etc.
- Basic and detailed design supervision for Baeknyeon pedestrian bridge construction over the Han-river

Interchanges

- Basic and detailed design for interchange construction between Yeonsan and Nonsan Station of Honam railway line/ between Miryang and Samnangjin Station of Gyeongbu railway line/ between Gyeongsan and Samseong Station of Gyeongbu railway line
- Detailed design for overpass construction of Hwarang intersection
- Basic and detailed design for interchange construction around Sang-In 4-way intersection
- Engineering design for the construction of Gangbyeon road (the north interchange of Jamsil Bridge)
- Engineering design for the construction of the north interchange of Cheonho Bridge

Tunnels, underpasses and underground shopping centers

- Design supervision for detailed design Yongma Tunnel Construction (PPP)
- Detailed design for Sabuk Underpass construction
- Detailed design for the construction of Uljeon Underpass of Gyeongbu railway line
- Engineering design for the construction of underground shopping center at Seongnam-Jungang road/ Yeouido Station/ Myeongdong Station/ Namdaemun Station/ Eulgiro Station/ Cheonggye No.7/ Gangnam Station

Geotechnical investigation and engineering design/ Utility tunnel and Telecommunication tunnel

Geotechnical investigation and engineering design

- Geotechnical investigation, test and engineering design for foundation for own contract projects
- Geotechnical investigation for widening of Namhae expressway between Gonyang and Sanin Township (Sec. 5)
- Geotechnical investigation for basic design for Bukmyeon-Yongdae expressway
- Geotechnical investigation for basic design for Jeonju-Gwangyang expressway
- Geotechnical investigation for basic design for Jeonju-Gwangyang expressway (Sec. 10)
- Temporary structural design for Seoul subway line 7 extension (Sec. 702)
- Geotechnical investigation for pylon foundation for 345kV Shin-Incheon Transmission Line(T/L), etc.
- Geotechnical investigation for 154kV Yongmun Substation(S/S) construction site
- Geotechnical investigation for alternative design for 4-lane widening and pavement of access road between Jangseungpo-port and Jangmok Township for Geoga Bridge (Daewoo E&C Co., Ltd.) (T/K)
- Geotechnical investigation for basic and detailed design for the construction of Jinyeong-Changwon of Gyeongjeon double-track line between Samnangjin and Jinju Station (Sec. 3) (SK E&C Co., Ltd.) (T/K)
- Geotechnical investigation for basic design for railway improvement of Jeolla line between Seongsan and Shinpung Station (Hyundai Development Co., Ltd.) (T/K)
- Temporary structural design for Seoul subway line 9 construction (Sec. 904) (GS E&C Co., Ltd.) (T/K)

Utility tunnel design

- Basic and detailed design for utility tunnel construction for 345kV Shin-Seongnam T/L (T/K)
- Basic and detailed design for the construction of utility tunnel between Hwayang and Sangbong Township for Gwangjin-Jungnang regional electric supply facility in Seoul (T/K)
- Engineering design for the construction of utility tunnel between Banghak and Dobong Township for Dogong-Nowon-Uijeongbu regional electric supply facility
- Basic and detailed design for the construction of utility tunnel between Godeok Township and Seo-Anseong City and, Wonam Village for Anseong-Pyeongtaek regional electric supply facility
- Detailed design for the construction of utility tunnel between Dong-Seoul No.2 and Samseong No.2 for south-east of Seoul regional electric supply facility
- Basic and detailed design for the construction of utility tunnel between Geum-oh and Sanggye Township for Nowon Ward regional electric supply facility in Seoul
- Basic and detailed design for the construction of utility tunnel for Shin-Gangseo Branch for Gangseo regional electric supply facility in Busan Metropolitan City

Telecommunication tunnel design

- Detailed design for of unmanned telecommunication tunnel(IKT) construction in Jeongeup City
- Detailed design for of unmanned telecommunication tunnel (KT) construction in Wonju City

Underground safety impact assessment

- Underground safety impact assessment for Gangnam Intermodal Transit Center
- Underground safety impact assessment for utility tunnel between Homaesil Township and South of Suwon City
- Underground safety impact assessment for subway elevation convenience facilities installation in Yangjae Station (2020)
- Underground safety impact assessment (including geotechnical investigation) for Seoul Eoullim sports center construction

Construction management

Expressway

- Construction supervision for expressway between Jeonju and Gwangyang City (Sec. 13)
- Construction supervision (Supervisory authority representative) for Yongin-Seoul expressway
- Construction supervision (Supervisory authority representative) for Suwon-Gwangmyeong expressway
- Construction management for expressway No.14 between Miryang City and Ulsan Metropolitan City(from Sec. 6 to 10)
- Construction management for expressway No.32 between Asan and Cheonan City and widening of expressway No.1 between Dong-I Township and Okcheon County
- Construction management for maintenance of Busan-Gyeongnam regional branch of Korea Expressway Corporation (Region 1) in 2020 - 2021
- Construction management for maintenance of Busan-Gyeongnam regional branch of Korea Expressway Corporation (Region 2) in 2020 - 2021

National route

- Construction supervision (Supervisory authority representative) for national route between Yeongcheon City and Samchang Village
- Construction supervision (Supervisory authority representative) for widening of national route between Sunchang County and Unam Township
- Construction supervision (Supervisory authority representative) for central government-funded local highway between Buk Township and Yongdae Village
- Construction supervision (Supervisory authority representative) for widening of national route between Sunchang IC and Jusan Village
- Construction supervision (Supervisory authority representative) for widening of national route between Doam Township and Gangjin County
- Construction supervision (Supervisory authority representative) for widening of national route between Ssangbaek Township and Hapcheon County
- Construction supervision (Supervisory authority representative) for national route between Sosa and Noksan Township
- Construction supervision (Supervisory authority representative) for national route bypass between Bongsan Township and Jangyang Village in Wonju City
- Construction management for national route between Cheongdo County and Miryang City (Sec. 1)
- Construction management for Cheongsong national route bypass
- Construction supervision (Supervisory authority representative) for national route between Jeongok Village and Yeongjung Township (Sec. 2)

Local highway

- Construction supervision (Supervisory authority representative) for widening and pavement of national highway between Hakui JCT and Gwacheon City
- Construction supervision (Supervisory authority representative) for local highway between Cheonan City and Pungse Township and between Gwadeok and Bosanwon Township
- Construction supervision (Supervisory authority representative) for national connection route between Dongmyeon and Jangan Township
- Construction management (Supervisory authority representative) for widening and pavement of local highway between Ihwa and Samgye Village (Sec. 2)
- Construction management for widening and pavement of local highway between Geoje and Anchi Village, etc.

City road

- Construction supervision (Supervisory authority representative) for widening of national route between Maecheon Daegu metropolitan city road and Jicheon Township

Local River

- Construction supervision for the maintenance of Geumsan Stream
- Construction supervision (Supervisory authority representative) for the maintenance of Ui Stream
- Construction management for Hantan River Ecological Landscape Complex (including pedestrian bridge), etc.

National River

- Construction supervision (Supervisory authority representative) for river maintenance of Yeongcheon district of Geumho River area
- Construction supervision (Supervisory authority representative) for river maintenance of Mokcheon district of Mankyong River area
- Construction supervision (Supervisory authority representative) for river environment development of Bukhan River (Zone 10, 11, 12)

High speed railway

- Construction supervision for high speed railway between Seoul and Busan Station (Sec. 8)
- Construction supervision (Supervisory authority representative) for subgrade of Honam high speed railway (Sec. 1-4 and 2-1)
- Construction supervision for subgrade of Honam high speed railway between Gomakwon and Mokpo Station (Phase 2) (Sec. 7)

Conventional railway

- Construction supervision (Supervisory authority representative) for subgrade of Ulsan-Pohang double-track line (Sec. 2)
- Construction supervision (Supervisory authority representative) for subgrade of Jungang double-track line between Wonju and Jechon Station (Sec. 4)
- Construction supervision (Supervisory authority representative) for disaster prevention facilities for 26 sites of Gyeongbu line between Yeongdong and Hwangsan Station
- Construction supervision (Supervisory authority representative) for box culvert across railway track between Simcheon and Yeongdong Station of Gyeongbu line

Subway

- Construction supervision (Supervisory authority representative) for Sillim light railway line in Seoul (Sec. 4) (PPP)
- Construction management for Hanam line (the extension of Seoul subway line 5) (Sec. 1-2)
- Construction management (Supervisory authority representative) for the underground space of Yeongdong Boulevard complex development project (Civil Zone 1)

Wide-area railway

- Construction management for subgrade of Seoul metropolitan railway GTX-A (Sec. 1, 2) (PPP)
- Construction management for subgrade of Seoul metropolitan railway GTX-A (Sec. 5) (PPP)
- Construction management for subgrade of Shin-Ansan double-track line (Sec. 1) (PPP)
- Construction management for subgrade of Shin-Ansan double-track line (Sec. 2) (PPP)
- Construction management for Indeokwon-Dongtan double-track line (Sec. 1) and Weolgot-Pangyo double-track line (Sec. 8)

Land development

- Construction supervision (Supervisory authority representative) for Yeongdong industrial complex
- Construction supervision (Supervisory authority representative) for Pungse general industrial complex in Cheonan City (Phase 2)
- Construction supervision for urban development of Hakik block No.1 in Yonghyeon Township, Incheon Metropolitan City

Water supply and Sewerage

- Construction supervision for Guksabong and Sadang reservoir
- Construction supervision for waterworks for Jungbu and Seobu Water Supply Office
- Construction supervision for sewage culvert around Seoun central government-funded local highway
- Construction management for comprehensive maintenance of sewer pipeline in Hwagok drainage sector No.2, etc.
- Construction management for the watershed separation tunnel of Banpo-stream
- Construction management for comprehensive maintenance of sewerage pipeline of Shinwol drainage supply facility
- Construction management of the water supply system improvement for Umyeonsan booster station
- Construction management for agriculture and fishery residential water development in Gucheon district
- Construction management for the waterworks in Gangnam(South of Seoul)
- Construction management for agriculture and fishery residential water expansion in Deoksan district

Utility tunnel

- Construction management for utility tunnel between Seo-Seoul and Sanbon Village for Gunpo regional electric supply facility
- Construction management for utility tunnel between Gajeong and Shin-Bupyeong No.2 for west regional electric supply facility of Seoul
- Construction management for utility tunnel between Deoki and Hosu Township for Seo Ward regional electric supply facility in Ilsan Ward
- Construction management for utility tunnel between Gydade University and Bangbae Township
- Construction management for utility tunnel between Chang and Banghak Township for Dobong regional electric supply facility
- Construction management for utility tunnel of Yongdu branch point for Dongdaemun regional electric supply facility
- Construction management for utility tunnel of Jukjeon branch
- Construction management for the relocation of utility tunnel for Yulgok Seoul metropolitan city road
- Construction management for utility tunnel between Nam-Gunpo City and Uiwang City for Gunpo-Uiwang regional electric supply facility
- Construction management for utility tunnel between Godeok Township, Seo-Anseong City and Wonam Village for Anseong-Pyeongtaek regional electric supply facility